

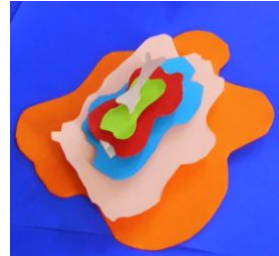
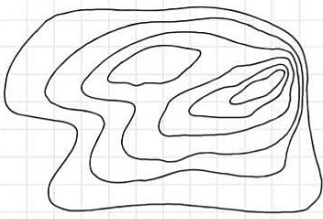
Year 4 Geography Homework Project

It's time to get creative, Year 4! We would like you to use the materials you have at home to make one of the following:

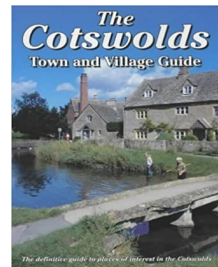
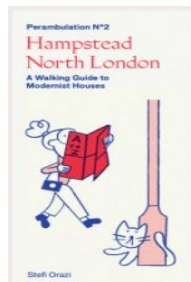
1. A model of the world, labelling the main lines of longitude and latitude.



2. A contour map. This could be 2D or 3D.



3. A walking guide for a local walk



Please hand in your projects by **Friday 11th October** . We can't wait to see them!

Science



Computing



Art / DT

